

CATALOGO DE ANTENAS PARA RADIOS PORTATILES



**COMUNICACIONES
DIGITALES EN TODO EL
PAIS, LA MAYOR RED DE
PANAMÁ**

Inrico®



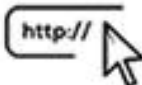
MOTOROLA

KENWOOD ICOM

VDCE CORP 
Voice & Data Communication Equipment Corp



+507 393-6454



<http://VDCECORP.COM>



@VDCECORP

VOICE & DATA COMMUNICATIONS EQUIPMENTS CORP

RUC. 1385747-1- 625113 DV 0

Vía. España Edificio Domino piso 2 oficina 21, a 30mtrs de vía argentina

Telf. 3936454 / 61068034 / 60902085

INFORMACIÓN TÉCNICA



Modelo: LMG-450

Marca: HUSTLER

Antena Móvil UHF, Ajustable en Campo, Rango de Frecuencia 450-470 MHz.

Especificaciones:

- Rango de Frecuencia: 450-470 MHz.
- Ganancia: 5 dB.
- Potencia: 200 Watts.
- Cable: N/A.
- Conector: N/A.
- Longitud Máxima: 93 cm.
- Requiere: Montaje de 3/4" NMO58UNC.



VOICE & DATA COMMUNICATIONS EQUIPMENTS CORP

RUC. 1385747-1- 625113 DV 0

Vía. España Edificio Domino piso 2 oficina 21, a 30mtrs de vía argentina

Telf. 3936454 / 61068034 / 60902085

Modelo: PMAE4003

Marca: MOTOROLA



Antenas cortas y rechonchas y disimuladas son ideales para radios llevadas en el cinturón. Esta resistente antena 9 cm stubby cuenta con un diseño sin encapsulado para una máxima flexibilidad. La antena UHF funciona en el rango de 430-470 MHz.

VOICE & DATA COMMUNICATION EQUIPMENT CORP

PANAMA

INFORMACION TECNICA

ANTENAS AEREA [Products](#)

- 110-320 Rod Antenna, Tri-banda, Doble entrada



- **110-320 Rod Antenna, Tri-banda,
Doble entrada**

Rod Antenna, Tri-band, Dual Input

Model Number: 110-320 (white) and 110-320-04 (black)

Rod Antenna, Tri-Band, Dual Input, 121.5, 243 & 406 MHz

ESPECIFICACIONES

FRECUENCIA	121.5, 243 & 406 MHz
VSWR	2.0:1 - 121.5/243 MHz, 1.5:1 - 406 MHz
POLARIZACION	Vertical
PATRON DE RADIACION	Omni-directional
Impedence RF	50 OHMS (nominal)
POTENCIA	25 Watts
PESO	0.45 lbs.
ALTURA	15.50"
MATERIAL	Molded radome/fiberglass whip
TERMINACION	Polyurethano
CONECTOR	BNC (female) for 121.5/243 MHz, TNC (female) for 406 MHz
TEMPERATURA	-55° C to + 85° C
ALTITUD	55,000'
Color	110-320 (white), 110-320-04 (black)
PROTECTOR	B31725(OPCIONAL)

- mayor informacion

<https://www.acrartex.com/products/catalog/elt-antennas/110-320-rod-antenna-tri-band-dual-input/#sthash.fd3DXy9X.dpuf>

VOICE & DATA COMMUNICATION EQUIPMENT CORP

RUC 1385747-1-625113 DV 0

INFORMACION TECNICA

MARCA TRAM

CASA PRODUCTORA TRAM

ORIGEN ASIA

MODELO 1400T



Antena Base VHF Omnidireccional. (1400T)

Descripción

- Rango de Frecuencia: 135 - 174 MHz.
- Ganancia: 6 dB.
- Ancho de Banda: 5 MHz.
- Potencia: 200 W.
- Conector: UHF Hembra.
- Longitud Máxima: 3m.
- Resistencia al viento: 193 km/h.

VOICE & DATA COMMUNICATION EQUIPMENT CORP

RUC 1385747-1-625113 DV 00

PANAMA

INFORMACION TECNICA

ANTENA DE USO MARINO

MARCA SHAKESPEARE

MODELO 5225-XT



Marine Mobile antenna, VHF, SHAKESPEARE, 6dB, 100 W, cable 6m RG8X, UHF male connector, Length 2.4 /7.87 ft.

Model: 5225XT

Brand: **SHAKESPEARE**

USO MARINO REISTENTE AL AGUAREQUIERE MONTAJE 4187 MONTAJE DE ACERO INOXIDABLE REGULABLE USD 59,00

PERTENECE A LA EXCELENTE SERIE GALAXY

VOICE & DATA COMMUNICATIONS EQUIPMENTS CORP

RUC. 1385747-1- 625113 DV 0

Vía. España Edificio Domino piso 2 oficina 21, a 30mtrs de vía argentina

Telf. 3936454 / 61068034 / 60902085

INFORMACIÓN TECNICA

ANTENA PARA RADIO PORTATIL MOTOROLA MODELO 8505241U03

- Motorola 8505241U03 800 MHz Flexible Whip Antenna





Motorola 8505241U03 800 MHz Antena Flexible Whip

MFR# 8505241U03 SKU# 8505241U03

Motorola 8505241U03 Esta es una antena en 800 MHz ½ wave, 806-870 MHz, 7 in La antena tienen un núcleo de acero, así como una espiral que le da mayores características de radiación..

Compatible Motorola Radios	GTX Privacy Plus , HT1000 , LTS 2000 , MTX-LS , MTX8250-LS , MTX838 , MTX850 , PRO5550 , PRO7550 , Saber I R , Saber II R , XTS 1500 , XTS 2500 , XTS 3500 , XTS 5000
Type/Style	Portable Radio Antennas
Listed Under The Following Manufacturer Part Numbers	8505241U03
Casa Productora	Motorola
Marca	Motorola
Color	Negro
Garantia	Garantia Motorola
Type	Flexible Whip
Banda	800
Frecuencia Rango	806-870 MHz
Longitud	8 in



VOICE & DATA COMMUNICATIONS EQUIPMENTS CORP

RUC. 1385747-1- 625113 DV 0

Vía. España Edificio Domino piso 2 oficina 21, a 30mtrs de vía argentina

Telf. 3936454 / 61068034 / 60902085

Antena Movil: PCTEL

Modelo: ASP-7455

Especificaciones.-

- Frecuencia específica 138-174 MHz
- DBi de ganancia 5.1 dBi
- Antena móvil Tipo de montaje NMO
- Material del látigo Acero inoxidable
- Longitud del látigo 49 in
- Potencia máxima 150 W
- Color Plata / Negro



VOICE & DATA COMMUNICATION EQUIPMENT CORP

RUC 1385747-1-625113 DV 0

INFORMACION TECNICA

MARCA CUSHCRAFT

CASA PRODUCTORA CUSHCRAFT

ORIGEN ASIA

MODELO CRX-150B



**Antena Base VHF,
Omnidireccional, Rango de
Frecuencia 150-174 MHz.
(CRX-150B)**



Descripción

- Rango de Frecuencia: 135 - 174 MHz.
- Ganancia: 6 dB.
- Ancho de Banda: 5 MHz.
- Potencia: 200 W.
- Conector: UHF Hembra.
- Longitud Máxima: 3m.
- Resistencia al viento: 193 km/h.



VOICE & DATA COMMUNICATIONS EQUIPMENTS CORP

RUC. 1385747-1- 625113 DV 0

Vía. España Edificio Domino piso 2 oficina 21, a 30mtrs de vía argentina

Telf. 3936454 / 61068034 / 60902085

Modelo: DB222-A

Marca: **ANDREW**



Especificaciones:

- Rango de Frecuencia: 150-158 MHz.
- Dipolos: 2.
- Ganancia: 3 / 6 dB.
- Ancho de Banda: 8 MHz.
- Potencia: 500 Watts.
- Conector: N Macho.
- Resistencia al viento: 200 km/h.
- Incluye Montaje.**
- Para montaje lateral en torre se sugiere kit DB-5001**



VOICE & DATA COMMUNICATIONS EQUIPMENTS CORP

RUC. 1385747-1- 625113 DV 0

Vía. España Edificio Domino piso 2 oficina 21, a 30mtrs de vía argentina

Telf. 3936454 / 61068034 / 60902085

Modelo: DB224A

Marca: **ANDREW**

Especificaciones:

- Rango de Frecuencia: 150-160 MHz.
- Dipolos: 4.
- Ganancia: 6 / 9 dB.
- Ancho de Banda: 10 MHz.
- Potencia: 500 Watts.
- Conector: N Macho.
- Resistencia al viento: 129 Km/h



INCLUYE. ABRZADERA Y CON MONTAJE ASPR-616

<http://ftp3.syscom.mx/usuarios/ftp/2016/02/22/955e9/DB224-A.pdf>



VOICE & DATA COMMUNICATIONS EQUIPMENTS CORP

RUC. 1385747-1- 625113 DV 0

Vía. España Edificio Domino piso 2 oficina 21, a 30mtrs de vía argentina

Telf. 3936454 / 61068034 / 60902085

Modelo: DB224C

Marca: **ANDREW**



Especificaciones:

- Rango de Frecuencia: 164-174 MHz.
- Dipolos: 4.
- Ganancia: 6 / 9 dB.
- Ancho de Banda: 10 MHz.
- Potencia: 500 Watts.
- Conector: N Macho.
- Resistencia al viento: 129 Km/h.
- Incluye Montaje.
- Para montaje lateral en torre se sugiere kit DB-5001
- Dipolos montados en mástil de aluminio incluido Incluyen abrazaderas para montaje en punta de mástil



VOICE & DATA COMMUNICATIONS EQUIPMENTS CORP

RUC. 1385747-1- 625113 DV 0

Vía. España Edificio Domino piso 2 oficina 21, a 30mtrs de vía argentina

Telf. 3936454 / 61068034 / 60902085

Modelo: DB224E

Marca: **ANDREW**

Especificaciones:

- Rango de Frecuencia: 138-150 MHz.
- Dipolos: 4.
- Ganancia: 6 / 9 dB.
- Ancho de Banda: 12 MHz.
- Potencia: 500 Watts.
- Conector: N Macho.
- Resistencia al viento: 129 Km/h.
- Dipolos montados en mástil de aluminio. Incluye abrazaderas para montaje en punta de mástil
- Para montaje lateral en torre se sugiere kit DB-5001



DB224-E



1-port omni exposed dipole antenna, 138–150 MHz, 360° HPBW, fixed electrical tilt

- Broad response
- Two-piece mast for ease of shipping

Electrical Specifications

Frequency Band, MHz	138–150
Gain, dBi	8.1
Beamwidth, Horizontal, degrees	360
Beamwidth, Vertical, degrees	16.0
Beam Tilt, degrees	0
VSWR Return Loss, dB	1.5 14.0
Input Power per Port, maximum, watts	500
Polarization	Vertical
Impedance	50 ohm

General Specifications

Operating Frequency Band	138 – 150 MHz
Antenna Type	Omni
Band	Single band
Performance Note	Outdoor usage

Mechanical Specifications

RF Connector Quantity, total	1
RF Connector Quantity, low band	1
RF Connector Interface	N Male
Color	Silver
Grounding Type	RF connector inner conductor and body grounded to reflector and mounting bracket
Radiator Material	Aluminum
RF Connector Location	Bottom
Wind Loading, maximum	560.5 N @ 100 mph 126.0 lbf @ 100 mph
Wind Loading, maximum (temporary)	126.0 lbf @ 100 mph 560.5 N @ 150 km/h
Wind Speed, maximum	130 km/h 81 mph

Dimensions

DB224-E

Length 6858.0 mm | 270.0 in
Net Weight, without mounting kit 17.2 kg | 37.9 lb

Regulatory Compliance/Certifications

Agency

RoHS 2011/65/EU
ISO 9001:2015
China RoHS SJ/T 11364-2014

Classification

Compliant by Exemption
Designed, manufactured and/or distributed under this quality management system
Above Maximum Concentration Value (MCV)



Included Products

DB365-OS — Pipe Mounting Kit that consists of two clamps for mounting antennas to round members 1.25 - 3.5 in (35 - 89 mm) OD round members.

* Footnotes

Performance Note Severe environmental conditions may degrade optimum performance

Exposed Dipole Quasi-Omni Antenna

138 - 174 MHz / 9 or 12 dBd Gain



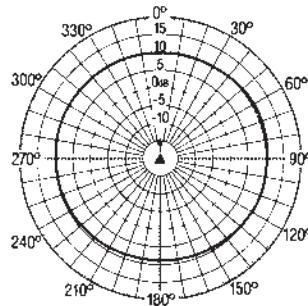
DB 228

30-512 MHz

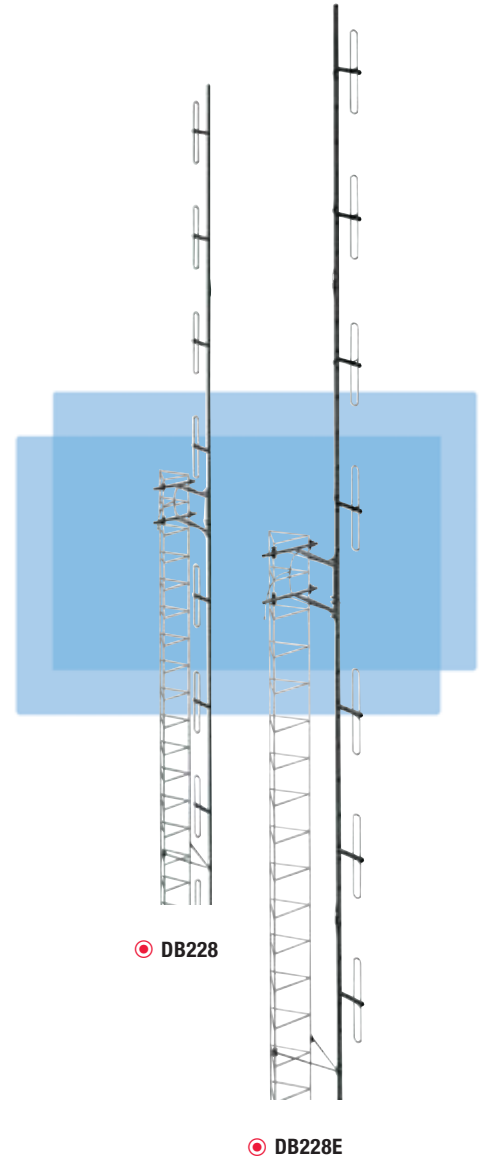
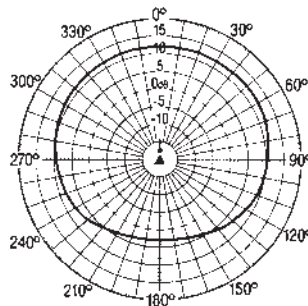
A high-gain, broadband antenna for 138-174 MHz, the 8-dipole DB228 combines two DB224E offset-pattern antennas to provide a 9 dBd gain omni or a 12 dBd gain offset horizontal pattern. Both DB224E antennas are mounted with the ends together, and the phasing harness is terminated at the center. A special bracket positions the antenna at a pre-determined distance from the tower.

- Flexible Mounting** — Normal mounting is half above and half below the top of a tower; however, the DB228 can be fully side mounted.
- Broad Bandwidth** — Can provide symmetrical patterns for both transmit and receive, and can be used in single or multi-frequency systems.
- Offset or Circular Patterns** — When all elements point toward the tower, a circular pattern is created; when all elements point away from the tower, an offset pattern occurs. The pattern can be changed in the field by rotating the mast 180°.
- Lightning Resistant** — The radiators operate at DC ground, and the aluminum mast, with its pointed cap, provides a low resistant discharge path to the tower or ground system.

DB228 Horizontal Circular Pattern



DB228 Horizontal Offset Pattern



ELECTRICAL DATA

Frequency Ranges* – MHz	A = 150-160, B = 155-165, C = 164-174, E = 138-150	
Bandwidth (150-174 MHz) – MHz	10	
VSWR	1.5 to 1 or less	
Nominal Impedance – Ohms	50	
Gain (over half-wave dipole) – dBd	Omni Pattern	Offset Pattern
	9	12
Maximum Power Input – Watts	500	
Vertical Beamwidth (half-power points)	8°	
Lightning Protection	Direct ground	
Standard Termination	Captive Type N-Male attached to end of a flexible lead.	

* Special frequencies are available; contact factory for details.

MECHANICAL DATA

Radiating Elements (aluminum) – in. (mm)	0.5 (12.7) OD with 0.058 (1.47) wall
Maximum Exposed Area (flat plate equivalent) – ft ² (m ²)	7.3 (0.68)
Lateral Thrust at 100 mph (km/hr) – lbf (N)	292 (1,298.8)
Wind Rating:*	
Survival without ice – mph (km/hr)	100 (161)
Survival with 0.5" (12.7 mm) Radial Ice – mph (km/hr)	74 (119)
Overall Length (150-174 MHz) – in. (mm)	488 (12,395)
Shipping Length – in. (mm)	148 (3,759)
Net Weight (w/clamps, brackets) – lbs. (kg)	72 (32.66)
Shipping Weight (w/clamps, brackets) – lbs. (kg)	142 (64.41)

Note: The mechanical specifications are degraded for the antenna covering the 120-150 MHz band.

* Calculation of wind survivability does not include damage due to flying debris.

ORDERING INFORMATION

Order DB228 for omni and DB228E for offset pattern. Use the correct letter for frequency, and specify termination if non-standard. Included are NSO18279-001 mounting bracket, one sway brace and adjustable clamps for 12" to 36" (304.8 to 914.4 mm) between tower legs. 12038 Sway Brace, needed when the entire antenna is side mounted, and Dipole Stabilizer Kit 12088 (8 required) are optional. Order jumper cable separately.

VOICE & DATA COMMUNICATIONS EQUIPMENTS CORP

RUC. 1385747-1- 625113 DV 0

Vía. España Edificio Domino piso 2 oficina 21, a 30mtrs de vía argentina

Telf. 3936454 / 61068034 / 60902085

INFORMACION TECNICA ANTENAS SINCLAIR BASES



SINCLAIR 164/174 MHz 9/12dB Exposed Dipole Omni Antenna

MODELO DB228C

SINCLAIR 164/174MHZ broadband super gain array antenna has 9dB omni/12dB offset and a 500 watts input. Included with this antenna is a harness with N male termination and mounting hardware.

1

INFORMACION TECNICA

Specific Frequency	164-174 MHz
Antenna Pattern	Adjustable
Gain dBi	12 dBi
Gain dBd	9 dBd
Polarization	Vertical

Vertical Beamwidth	8 deg
Horizontal Beamwidth	360 deg
Maximum VSWR	1.5:1
Maximum Power	500 W
Lightning Protection	DC Ground
RF Connectors	N Male
Connector Placement	Bottom
Jumper Included	Yes
Type of Hardware Included	Side Mount Brace
Maximum Rated Wind Velocity	100 mile/h
Item Length	488 in
Item Weight	72 lb
Mfg. Warranty	2 Years

VOICE & DATA COMMUNICATIONS EQUIPMENTS CORP

RUC. 1385747-1- 625113 DV 0

Vía. España Edificio Domino piso 2 oficina 21, a 30mtrs de vía argentina

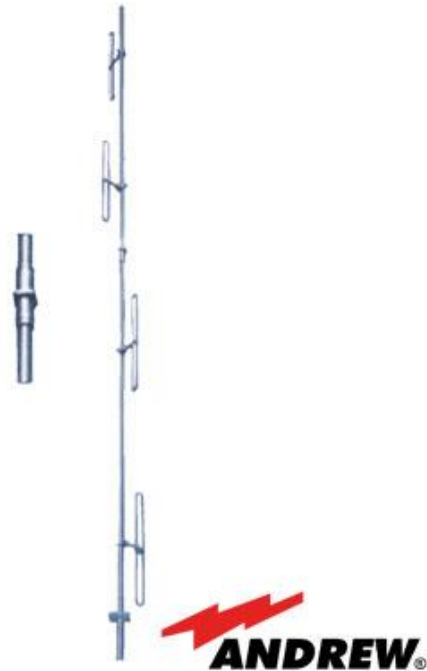
Telf. 3936454 / 61068034 / 60902085

INFORMACION TECNICA

Modelo: DB264-A

Marca: ANDREW

Antena Base VHF, de 4 Dipolos, Rango de Frecuencia 150-160 MHz.



- Rango de Frecuencia: 150-160 MHz.
- Dipolos: 4.
- Ganancia: 6 / 9 dB.
- Ancho de Banda: 10 MHz.
- Potencia: 300 Watts.
- Conector: N Macho.
- Resistencia al viento: 161 km/h.
- Dipolos montados en mástil de aluminio incluido Incluyen abrazaderas para montaje en punta de mástil
- Para montaje lateral en torre se sugiere kit DB-5001

VOICE & DATA COMMUNICATIONS EQUIPMENTS CORP

RUC. 1385747-1- 625113 DV 0

Vía. España Edificio Domino piso 2 oficina 21, a 30mtrs de vía argentina

Telf. 3936454 / 61068034 / 60902085

INFORMACIÓN TÉCNICA



Antena Base UHF de 4 Dipolos, Rango de Frecuencia 450 - 470 MHz.

Modelo: DB411B

Marca: **ANDREW**

Especificaciones:

- Rango de Frecuencia:450-470 MHz.
- Dipolos:4.
- Ganancia:9 dB.
- Ancho de Banda:20 MHz.
- Potencia:250 Watts.
- Longitud:2.8 m.
- Conector:N Macho.
- Resistencia al viento:161 km/h.

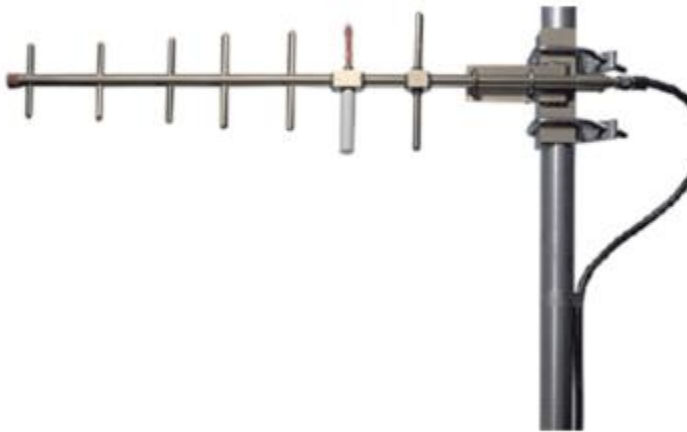
VOICE & DATA COMMUNICATIONS EQUIPMENTS CORP

RUC. 1385747-1- 625113 DV 0

Vía. España Edificio Domino piso 2 oficina 21, a 30mtrs de vía argentina

Telf. 3936454 / 61068034 / 60902085

INFORMACIÓN TECNICA



Antena Base, Direccional, Rango de Frecuencia 806 - 869 MHz.

Modelo: DB499A

Marca: **ANDREW**

Especificaciones:

- Tipo: Yagi / 7 elementos.
- Rango de Frecuencia: 806-869 MHz.
- Ganancia: 10 dB.
- Ancho de Banda: 63 MHz.
- Potencia: 150 Watts.
- Conector: N Hembra.
- Resistencia al viento: 241 km/h.



VOICE & DATA COMMUNICATIONS EQUIPMENTS CORP

RUC. 1385747-1- 625113 DV 0

Vía. España Edificio Domino piso 2 oficina 21, a 30mtrs de vía argentina

Telf. 3936454 / 61068034 / 60902085

Modelo: G71504

Marca: **HUSTLER**



Especificaciones:

Esta antena pertenece a la exitosa y bien conocida **serie G de Hustler**, la cual está diseñada para ofrecer el máximo rendimiento, calidad y durabilidad al mejor precio.

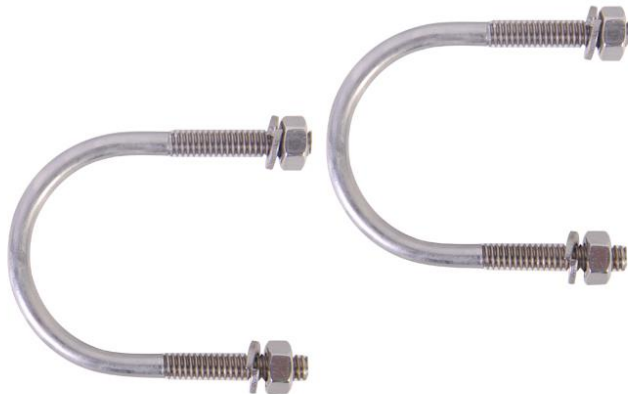
Ventajas

- **Mejor cobertura** gracias a su diseño eléctrico que provee un patrón estable y un ángulo bajo de radiación.
- Construidas con **aluminio de alta resistencia** para soportar las condiciones ambientales más adversas.
- Conexión directa a tierra que **reduce la exposición a descargas eléctricas** y electricidad estática.

Especificaciones

- Rango de Frecuencia: 167-174 MHz.
- Ganancia: 7 dB.
- Ancho de Banda: 3 MHz.
- Potencia: 600 Watts.
- Conector: N Hembra.
- Longitud Máxima: 4.25 m.
- Resistencia al viento: 161 km/h.

Accesorios incluidos para montaje en mástil con diámetro de hasta 1 1/2".



VOICE & DATA COMMUNICATIONS EQUIPMENTS CORP

RUC. 1385747-1- 625113 DV 0

Vía. España Edificio Domino piso 2 oficina 21, a 30mtrs de vía argentina

Telf. 3936454 / 61068034 / 60902085

INFORMACION TECNICA



VHF Base Antenna, OmniDirectional, Frequency Range 167 - 174 MHz.

Model: G71504

MARCA **HUSTLER**

ESPECIFICACIONES:

- Rango de Frecuencia: 167-174 MHz.
- Ganancia: 7 dB.
- Ancho de Banda: 4 MHz.
- Potencia: 600 Watts.
- Conector: N Hembra.
- Longitud Máxima: 4.25 m.
- Resistencia al viento: 161 km/h.

VOICE & DATA COMMUNICATIONS EQUIPMENTS CORP

RUC. 1385747-1- 625113 DV 0

Vía. España Edificio Domino piso 2 oficina 21, a 30mtrs de vía argentina

Telf. 3936454 / 61068034 / 60902085

INFORMACIÓN TÉCNICA



Antena Base UHF, Fibra de Vidrio, Rango de Frecuencia 406 - 430 MHz.

Modelo: HD940630

Marca: **HUSTLER**

Especificaciones:

- Rango de Frecuencia: 406-430 MHz.
- Ganancia: 9 dB.
- Ancho de Banda: 20 MHz.
- Potencia: 600 Watts.
- Conector: N Hembra.
- Longitud: 5.11 m.
- Resistencia al viento: 241 km/h.

* Incluye juego de 2 abrazaderas para montaje en diámetros de 1-1/2" a 3-1/4".

•

VOICE & DATA COMMUNICATIONS EQUIPMENTS CORP

RUC. 1385747-1- 625113 DV 0

Vía. España Edificio Domino piso 2 oficina 21, a 30mtrs de vía argentina

Telf. 3936454 / 61068034 / 60902085

INFORMACIÓN TÉCNICA



Antena Base UHF, Fibra de Vidrio, Rango de Frecuencia 450 - 470 MHz.

Modelo: HD945070

Marca: **HUSTLER**

Especificaciones:

- Rango de Frecuencia: 450-470 MHz.
- Ganancia 9 dB.
- Ancho de Banda: 20 MHz.
- Potencia: 600 Watts.
- Conector: N Hembra.
- Longitud: 4.57 m.
- Resistencia al viento: 241 km/h.

* Incluye juego de 2 abrazaderas para montaje en diámetros de 1-1/2" a 3-1/4".

•

VOICE & DATA COMMUNICATIONS EQUIPMENTS CORP

RUC. 1385747-1- 625113 DV 0

Vía. España Edificio Domino piso 2 oficina 21, a 30mtrs de vía argentina

Telf. 3936454 / 61068034 / 60902085

INFORMACION TECNICA

Información de Producto ANTENA MARINA 5206-C



Antena Marina, para Embarcación / Móvil, Banda VHF, 6 dB,
50 Watts.

Modelo: 5206C

Marca: **SHAKESPEARE**

Especificaciones:

- Ganancia: 6 dB.
- Potencia: 50 Watts.
- Cable: 4.5 m / RG-58.
- Conector: UHF Macho.
- Longitud: 2.4 m.
- Montaje Recomendado (no incluido): 4187 y 410R.

Recursos:

Accesorios

Listado de Productos



Montaje Rotativo de Acero Inoxidable, 4 Posiciones, Rosca Estándar 1" x 14 Hilos.

MODELO [4187](#)

SHAKESPEARE



Kit de Montaje con Soporte Giratorio Ajustable para Antenas de 1" ó 1 1/2" de Diámetro. Rosca Estándar 1" x 14 Hilos.

MODELO 410R

VOICE & DATA COMMUNICATIONS EQUIPMENTS CORP

RUC. 1385747-1- 625113 DV 0

Vía. España Edificio Domino piso 2 oficina 21, a 30mtrs de vía argentina

Telf. 3936454 / 61068034 / 60902085

Antena base, fibra de vidrio, rango frecuencia 806 - 866 MHz

Modelo: MFB-8583

Marca: PCTEL

- Rango de Frecuencia: 806-866 MHz.
- Ganancia: 3 dB.
- Ancho de Banda: 30 MHz.
- Potencia: 150 Watts.
- Conector: N Hembra.
- Longitud: 66 cm.
- Resistencia al viento: 161 km/h.

Incluye Kit de montajes sugeridos MMk3



VOICE & DATA COMMUNICATIONS EQUIPMENTS CORP

RUC. 1385747-1- 625113 DV 0

Vía. España Edificio Domino piso 2 oficina 21, a 30mtrs de vía argentina

Telf. 3936454 / 61068034 / 60902085

INFORMACIÓN TECNICA



MAXRAD
STATE OF THE ART ANTENNAS

[Antena Base, Fibra de Vidrio, Rango Frecuencia 806 - 866 MHz.](#)

[MFB8583](#)

GANANCIA 3dB

ANCHO DE BANDA 30MHZ

POTENCIA 150 VATIOS

CONECTOR: N HEMBRA

RESISTENCIA AL VIENTO 161 KM/H

INCLUYE EL MONTAJE MMK3 EN CADA ANTENA.

VOICE & DATA COMMUNICATIONS EQUIPMENTS CORP

RUC. 1385747-1- 625113 DV 0

Vía. España Edificio Domino piso 2 oficina 21, a 30mtrs de vía argentina

Telf. 3936454 / 61068034 / 60902085

Antena móvil VHF, ajustables en campo, rango de frecuencia 144 - 174 MHz

Modelo: MHB-5800

Marca: **TRINE**

- Rango de Frecuencia: 144-174 MHz.
- Ganancia: 3 dB.
- Potencia: 200 W.
- Cable: N/A.
- Conector: N/A.
- Longitud Máxima: 132 cm.
- Requiere montaje de 3/4" NMO.



VOICE & DATA COMMUNICATIONS EQUIPMENTS CORP

RUC. 1385747-1- 625113 DV 0

Vía. España Edificio Domino piso 2 oficina 21, a 30mtrs de vía argentina

Telf. 3936454 / 61068034 / 60902085

INFORMACION TECNICA



MAXRAD
STATE OF THE ART ANTENNAS

Model: MHB5800132

MAXRAD

Especificaciones:

-Rango de Frecuencia: 132-174 MHz. -Ganancia: 3 dB. -Potencia: 200 W. -Cable: N/A. -Conector: N/A. -Longitud

Máxima: 147 cm. -Requiere montaje de 3/4" NMO58UNC.



INCLUYE RESORTE MS

MAXRAD[®]
STATE OF THE ART ANTENNAS

VOICE & DATA COMMUNICATION EQUIPMENT CORP

INFORMACION TECNICA

ANTENAS PACTEL/MAXRAD MHB5800-132



MAXRAD
STATE OF THE ART ANTENNAS

MHB5800132

Antena Móvil VHF, Ajustables en Campo, Rango de Frecuencia 132 - 174 MHz.

- Características
- Descripción

- Rango de Frecuencia: 132-174 MHz.
- Ganancia: 3 dB.
- Potencia: 200 W.
- Cable: N/A.
- Conector: N/A.
- Longitud Máxima: 147 cm.
- Requiere montaje de 3/4" NMO58UNC.

Silhouette Transit Antennas

The silhouette antennas are designed for transit vehicle installations requiring overhead clearance, including buses, fire-fighting engines, railroad equipment, airport service vehicles, and construction equipment. These low profile multi-band antennas provide wideband coverage of specific frequencies without field tuning required.* They are housed in a high impact molded ASA radome for long-lasting performance under severe environmental conditions. A GPS multi-band model is also available.

Features

- Rugged - high impact molded ASA radome assures long, reliable performance and protection against the elements
- High Performance - when mounted on a flat surface, maximum radiation is vertical and omnidirectional
- Disguised Appearance - low profile for minimum exposure to theft or vandalism
- Wideband Coverage - requires no field tuning

Antenna Electrical Specifications

Model	Frequency Range	Bandwidth	Gain
ASPB574	148-160 MHz	0.5 MHz	Unity
ASPC574	160-174 MHz	0.5 MHz	Unity
ASP572	450-470 MHz	20 MHz	Unity
ASP772	450-470 MHz	20 MHz	Unity
ASPB572	470-488 MHz	18 MHz	Unity
ASPC572	488-512 MHz	24 MHz	Unity
ASP764	764-806 MHz	42 MHz	Unity
ASP931	806-894 MHz	88 MHz	Unity
ASPG931	890-960 MHz	154 MHz	Unity

Mechanical Specifications

Model	Termination	Dimensions
ASPB574	SO-239 (UHF female, panel mount)	4.1" H x 17" L x 3.5" W
ASPC574	SO-239 (UHF female, panel mount)	4.1" H x 17" L x 3.5" W
ASP572	UHF female, panel mount (mates with PL259 male)	3.13" H x 8" L x 3.5" W
ASP772	BNC female bulkhead	3.4" H x 8" L x 3.5" W
ASPB572	UHF female, panel mount (mates with PL259 male)	3.4" H x 8" L x 3.5" W
ASPC572	UHF female, panel mount (mates with PL259 male)	3.4" H x 8" L x 3.5" W
ASP764	N female, panel mount	3.4" H x 8" L x 3.5" W
ASP931	N female, panel mount	3.4" H x 8" L x 3.5" W
ASPG931	N female, panel mount	3.4" H x 8" L x 3.5" W



ASP574 low profile transit antenna series for VHF coverage



ASP931 low profile transit antenna



Technical Data

Maximum Power: 100 watts
Polarization: Vertical
Nominal Impedance: 50 ohms
VSWR: < 2.0:1, maximum
Radome Material: White, high impact molded ASA
Cable: Sold separately. Call factory for cable assembly options.
Mount Method: Standard 1-5/16" roof hole mount Supplied with screws and weather-proof gasket.

VDCE CORP

Voice & Data Communications Equipments Corp

RUC. 1385747-1- 625113 DV 0

Vía. España Edificio Domino piso 2 oficina 21, a 30mtrs de vía argentina

Telf. 3936454 / 61068034 / 60902085

MODELO. MUF-4305

MARCA. PCTEL

Antena Móvil UHF, Ajustables en Campo, Rango de Frecuencia 430-450 MHz.

- Rango de Frecuencia: 430-450 MHz.
- Ganancia: 5 dB.
- Potencia: 200 Watts.
- Cable: N/A.
- Conector: N/A.
- Longitud Máxima: 81 cm / 32 in.



<https://www.syscom.mx/producto/MUF-4305-PCTEL-24319.html>

VDCE CORP

Voice & Data Communications Equipments Corp

RUC. 1385747-1- 625113 DV 0

Vía. España Edificio Domino piso 2 oficina 21, a 30mtrs de vía argentina

Telf. 3936454 / 61068034 / 60902085

INFORMACION TECNICA

Antena Móvil UHF, Ajustables en Campo, Rango de Frecuencia 450 - 470 MHz.

Modelo: MUF4505

Marca: PCTEL

- Rango de Frecuencia: 450-470 MHz.
- Ganancia: 5 dB.
- Potencia: 200 Watts.
- Cable: N/A.
- Conector: N/A.
- Longitud Máxima: 81 cm.
- Requiere montaje de 3/4" NMO.



VOICE & DATA COMMUNICATIONS EQUIPMENTS CORP

RUC. 1385747-1- 625113 DV 0

Vía. España Edificio Domino piso 2 oficina 21, a 30mtrs de vía argentina

Telf. 3936454 / 61068034 / 60902085

INFORMACIÓN TECNICA

Antena para radio portátil Motorola NAF-5085 SERIE APX



DESCRIPCION

TIPO: ANTENA FLEXIBLE DE 8IN

Banda: 700 MHz, 800 MHz

Rango: 764-870 MHz

Color: Negro

½ onda

PARA LA SERIE DE RADIOS PORTATILES APX2000, APX5000, APX7000

VOICE & DATA COMMUNICATIONS EQUIPMENTS CORP

RUC. 1385747-1- 625113 DV 0

Vía. España Edificio Domino piso 2 oficina 21, a 30mtrs de vía argentina

Telf. 3936454 / 61068034 / 60902085

INFORMACIÓN TECNICA

- Motorola NAR6595 700/800 MHz Stubby Antenna



Motorola NAR6595 700/800 MHz Stubby Antenna

MFR# NAR6595A, NAR6595 SKU# NAR6595A

-
-
-

Motorola NAR6595 700/800 MHz, 764-870 MHz, antenna stuby para radios de la serie APX integrados con GPS..

Compatible Motorola Radios

[APX 4000](#), [APX 6000](#), [APX 6000XE](#), [APX 7000](#)

Tipo	Antena stubby para portatil
Numero de Parte	NAR6595A, NAR6595
Fabricante	Motorola Solutions
Marca	Motorola
Color	Negro
Garantia	Garantia Motorola
tipo	Stubby
Band	700/800
Frequency Range	764-870 MHz
Length	4 in

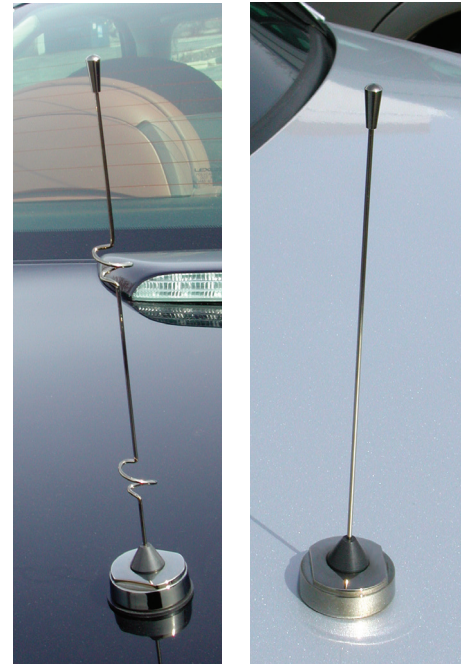


PCTCN Chrome Nut Antennas

PCTEL's high performance chrome nut antenna series offers a durable, super flexible design and reinforced brass button contact for maximum durability against external shock or limited vehicle height clearance. Wideband performance, attractive "Titanium gray" reflective finish and sleek drop shape rod tip, combined with market competitive prices makes this new series one of the best values on the marketplace.

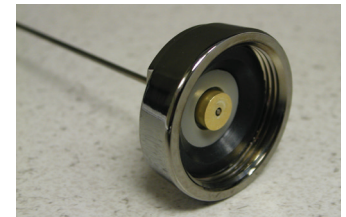
Features

- Optimized bandwidth performance - Only 11 models required to cover all frequencies between 118 MHz and 2.5 GHz
- High-Tech "Titanium gray" reflective plating - Closely mimics the color of the metallic surface on which the antenna is installed, nicely complementing the appearance of public safety, livery and service vehicles
- Gold plated, brass contact button interface - Provides optimized electrical performance, corrosion resistance and maximum 100lb pull force resistance for long lasting, trouble-free operation
- Tear drop style rod tip - Less prone to detachment due to impact (factory tuned models only)
- Heavy-duty zinc die cast base for maximum durability and corrosion resistance under extreme weather conditions
- Mates with all 1-1/8"-18 thread mounts, including 3/4" mounts



ELECTRICAL SPECIFICATIONS - RF ANTENNA

Model	Frequency Range	Factory Tuned Frequency	VSWR*	Average Power	Nominal Impedance	Gain
PCTCNMFT	118-940 MHz	Field Tunable	< 2.0:1	150 watts	50 ohms	Unity
PCTCN1520	152-162 MHz	157 MHz	< 2.0:1	150 watts	50 ohms	Unity
PCTCN1620	162-174 MHz	167 MHz	< 2.0:1	150 watts	50 ohms	Unity
PCTCN3840	380-430 MHz	405 MHz	< 2.0:1	150 watts	50 ohms	Unity
PCTCN4347	430-470 MHz	450 MHz	< 2.0:1	150 watts	50 ohms	Unity
PCTCN4750	470-512 MHz	491 MHz	< 2.0:1	150 watts	50 ohms	Unity
PCTCN7080	740-870 MHz	805 MHz	< 2.0:1	150 watts	50 ohms	Unity
PCTCN8090	806-960 MHz	883 MHz	< 2.0:1	150 watts	50 ohms	Unity
PCTCN8063	806-866 MHz	836 MHz	< 2.0:1	150 watts	50 ohms	3 dB
PCTCN8963	896-940 MHz	918 MHz	< 2.0:1	150 watts	50 ohms	3 dB
PCTCN24005	2.4-2.5 GHz	2.45 GHz	< 2.0:1	150 watts	50 ohms	4.5 dB



MECHANICAL SPECIFICATIONS

Model	Approximate Antenna Height	Mount Nut	Radiator Material
PCTCNMFT	24.0"	Zinc die cast; "Titanium" finish	.062" diameter stainless steel, "Titanium gray" finish
PCTCN1520	18.0"	Zinc die cast; "Titanium" finish	.062" diameter stainless steel, "Titanium gray" finish
PCTCN1620	18.0"	Zinc die cast; "Titanium" finish	.062" diameter stainless steel, "Titanium gray" finish
PCTCN3840	7.38"	Zinc die cast; "Titanium" finish	.062" diameter stainless steel, "Titanium gray" finish
PCTCN4347	6.2"	Zinc die cast; "Titanium" finish	.062" diameter stainless steel, "Titanium gray" finish
PCTCN4750	5.6"	Zinc die cast; "Titanium" finish	.062" diameter stainless steel, "Titanium gray" finish
PCTCN7080	3.3"	Zinc die cast; "Titanium" finish	.062" diameter stainless steel, "Titanium gray" finish
PCTCN8090	3.0"	Zinc die cast; "Titanium" finish	.062" diameter stainless steel, "Titanium gray" finish
PCTCN8063	14.5"	Zinc die cast; "Titanium" finish	.062" diameter stainless steel, "Titanium gray" finish
PCTCN8963	12.0"	Zinc die cast; "Titanium" finish	.062" diameter stainless steel, "Titanium gray" finish
PCTCN24005	8.75"	Zinc die cast; "Titanium" finish	.062" diameter stainless steel, "Titanium gray" finish

* VSWR at resonance is < 1.5:1



VOICE & DATA COMMUNICATIONS EQUIPMENTS CORP

RUC. 1385747-1- 625113 DV 0

Vía. España Edificio Domino piso 2 oficina 21, a 30mtrs de vía argentina

Telf. 3936454 / 61068034 / 60902085

Modelo: PMAD4049

Marca: MOTOROLA



Antena VHF funciona en el rango de 136-174 MHz.

VOICE & DATA COMMUNICATION EQUIPMENT CORP

RUC 1385747-1-625113 DV 0

INFORMACION TECNICA

ANTENA MOTOROLA

CASA PRODUCTORA MOTOROLA

ORIGEN MALASIA O CHINA

MODELO PMAE4022B



**Motorola UHF Heliflex Antena, 403-470
MHz [PMAE4022B]**

DESCRIPCION

. Antenas de látigo flexible tienen un acabado de una sola pieza, núcleo de acero y conductor enrollado en espiral para las características óptimas de radiación

Para los radios Motorola modelos : DGP 4150, DGP 6150.

VOICE & DATA COMMUNICATIONS EQUIPMENTS CORP

RUC. 1385747-1- 625113 DV 0

Vía. España Edificio Domino piso 2 oficina 21, a 30mtrs de vía argentina

Telf. 3936454 / 61068034 / 60902085

Modelo: PMAE4079A

Marca: MOTOROLA



Características:

- Tipo: Látigo
- Banda frecuencia: UHF
- Rango frecuencia: 403 - 527 Mhz
- GPS: Si
- Color. Negro

VOICE & DATA COMMUNICATION EQUIPMENT CORP

RUC 1385747-1-625113 DV 0

INFORMACION TECNICA

ANTENA SHAKESPEARE

CASA PRODUCTORA SHAKESPEARE

ORIGEN USA

MODELO 5225-XT



ANTENA SHAKESPEARE MARITIMA (5225-XT)

Descripción

Antena VHF de calidad superior

Ganancia: 6 dB

Altura: 8'

Material: fibra de vidrio recubierto con uretano

Elementos: latón y cobre

Tipo de base: Espejo acabado virola de acero inoxidable; 1"-14 hilos

Incluye: base 4187, cable 20'RG-8X coaxial y conector PL-259

Garantía: Cinco años limitada

VOICE & DATA COMMUNICATIONS EQUIPMENTS CORP

RUC. 1385747-1- 625113 DV 0

Vía. España Edificio Domino piso 2 oficina 21, a 30mtrs de vía argentina

Telf. 3936454 / 61068034 / 60902085

INFORMACIÓN TECNICA

ANTENA PARA RADIO PORTATIL MOTOROLA MODELO 8505241U06



Motorola [8505241U06] Stubby Quarterwave Antenna (806-870 MHz)

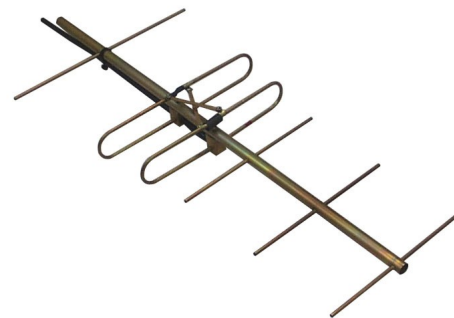
Compatible con: Motorola DTR650, Motorola MT1500, Motorola MTX8250, Motorola MTX8250•LS, Motorola MTX850, Motorola MTX850•LS, Motorola MTX9250, Motorola MTX950, PRO5550, PRO7550

Otros modelos de radios: ASTRO SABER, GTX LTR, GTX Privacy Plus, HT1000, JT1000, LTS2000, MT1500, MT2000, MTS2000, MTXLS, MTX800, MTX8000, MTX838, MTX850, MTX850 LS, MTX800, MTX900, MTX950, PR1500, PRO5350 LTR, PRO5550 PP, DTR550, DTR650, PR860, HT750, HT1250, HT1550XLS, HT1250LS+, MTX850, MTX950, MTX8250, MTX9250, MTX850LS, MTX8250LS, MTX8000, MTX9000, JT1000, STX, MTX800, MTX8250, MTX838, MTX850, MTX900, PR1500, Pro5350LTR, Pro5550PP, Pro7350LTR, Pro7550PP, VISAR, XTS1500, XTS2500, XTS3000, XTS3500, XTS4250, XTS5000

SY350-SFXSNM Yagi directional, 7 dBd, broad band, 406-512 MHz

- 7 dBd gain, over the entire band
- Ideal for use in coastal and mountainous areas
- Can be stacked for added gain

The SY350 series of antennas are broadband medium gain yagis that offer 7 dBd of gain over the entire band. Two or more antennas may be stacked for added gain.



Region	United States	Europe, Middle East and Africa	Caribbean and Latin America	Canada and rest of the world
Telephone	USA: 1 800 263 3275	International: +44 (0) 1487 84 28 19	International: +1 905 726 7676	Canada: 1 800 263 3275 International: +1 905 727 0165
E-mail	salesusa@sinctech.com	salesuk@sinctech.com	salesla@sinctech.com	salescan@sinctech.com
Product Specification Sheet EPR 018584 Customer Tech Manual 006247		SY350-SFXSNM	Issue: 2	Dated: 22-04-15 Dated: 01-10-13

Electrical Specifications

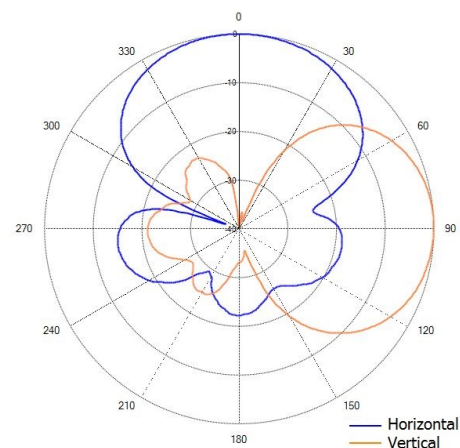
Frequency Range	MHz	406 to 512
Bandwidth	MHz	106
Connector		N-Male
Gain (nominal)	dBi (dBd)	9.1 (7)
Input VSWR (max)		2:1
Polarization		vertical or horizontal
Impedance	Ω	50
Pattern		Directional
Horizontal beamwidth (typ)	degrees	80
Vertical beamwidth (typ)	degrees	60
Average Power Input (max)	W	150
Front-to-back ratio (typ)	dB	20

Mechanical Specifications

Depth	mm (in)	95 (3.75)
Length/ Height	mm (in)	864 (34)
Width	mm (in)	376 (14.81)
Base pipe diameter	mm (in)	21 (0.84)
Base pipe mounting length	mm (in)	76 (3)
Radiating element material		aluminum
Weight	kg (lbs)	1.29 (2.85)
Weight iced	kg (lbs)	4.9 (10.8)
Mounting Hardware (Standard)		Clamp115
Actual Shipping weight	kg (lbs)	3.18 (7)
Shipping dimensions	mm (in)	1067x229x102 (42x9x4)

Environmental Specifications

Temperature range	°C (°F)	-40 to +70 (-40 to +158)
Wind Loading Area (Flat Plate Equivalent)	m ² (ft ²)	0.04 (0.38)
Wind Loading Area (1/2" ice)	m ² (ft ²)	0.1 (1.06)
Rated wind velocity (no ice)	km/h (mph)	298 (185)
Rated wind velocity (1/2" radial ice)	km/h (mph)	177 (110)
Lateral thrust (100 mph No Ice)	N (lbs)	67.2 (15.1)
Bending moment (100 mph No Ice)	Nm (ft-lbs)	25.9 (19.2)
Tip deflection (100 mph No Ice)	degrees	0.6



Region	United States	Europe, Middle East and Africa	Caribbean and Latin America	Canada and rest of the world
Telephone	USA: 1 800 263 3275	International: +44 (0) 1487 84 28 19	International: +1 905 726 7676	Canada: 1 800 263 3275 International: +1 905 727 0165
E-mail	salesusa@sinctech.com	salesuk@sinctech.com	salesla@sinctech.com	salescan@sinctech.com

VOICE & DATA COMMUNICATIONS EQUIPMENTS CORP

RUC. 1385747-1- 625113 DV 0

Vía. España Edificio Domino piso 2 oficina 21, a 30mtrs de vía argentina

Telf. 3936454 / 61068034 / 60902085

INFORMACIÓN TECNICA

Antena Base VHF, Omnidireccional,

Rango de Frecuencia 136 - 174 MHz, 6dB.

Marca: TRAM

Modelo: 1400T

Especificaciones:

- Rango de Frecuencia: 136 - 174 MHz.
- Ganancia: 6 dB.
- Ancho de Banda: 5 MHz.
- Potencia: 200 W.
- Conector: UHF Hembra.
- Longitud Máxima: 3m.
- Resistencia al viento: 193 km/h.



VOICE & DATA COMMUNICATIONS EQUIPMENTS CORP

RUC. 1385747-1- 625113 DV 0

Vía. España Edificio Domino piso 2 oficina 21, a 30mtrs de vía argentina

Telf. 3936454 / 61068034 / 60902085

INFORMACIÓN TECNICA

Antena Base UHF, fibra de vidrio ajustable, rango de frecuencia 406 - 512 MHz.

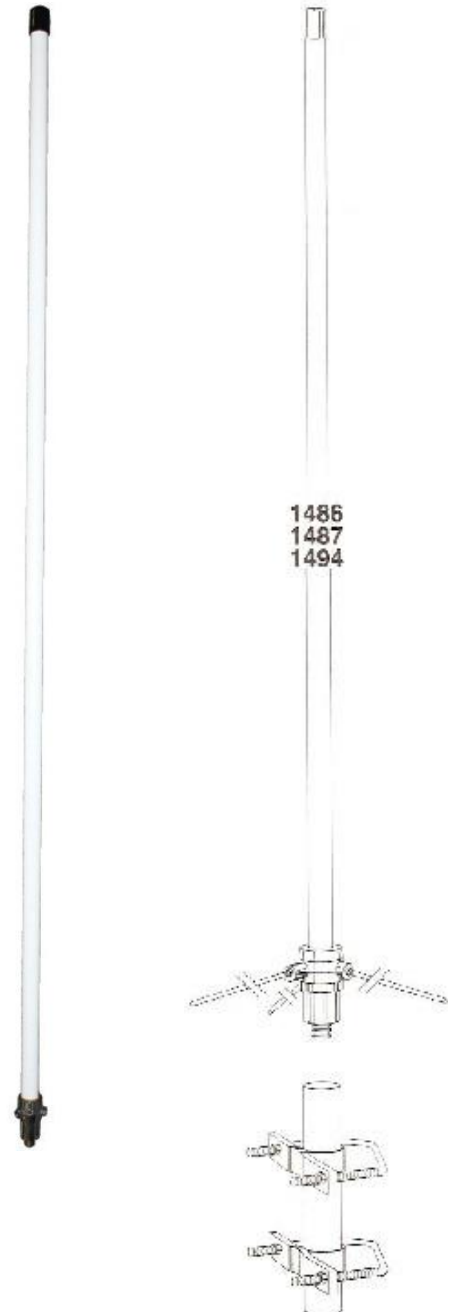
Marca: TRAM

Modelo: 1486

Especificaciones:

- Rango de Frecuencia: 406-512 MHz.
- Ganancia: 6.5 dB.
- Ancho de Banda: 10 MHz.
- Potencia: 200 Watts.
- Conector: UHF Hembra.
- Longitud: 1.7 m.
- Resistencia al viento: 193 Km/h.

Requiere ajuste.



VOICE & DATA COMMUNICATIONS EQUIPMENTS CORP

RUC. 1385747-1- 625113 DV 0

Vía. España Edificio Domino piso 2 oficina 21, a 30mtrs de vía argentina

Telf. 3936454 / 61068034 / 60902085

Montaje magnetico para antenas de 3/4" (Nmo), 5 m de cable RG-58A/U,
conector UHF (PL-259) macho, diámetro de 5"

Modelo: 1240

Marca: **TRAM BROWNING**



Tipo de Montaje NMO 3/4" Cable 5 m de cable RG58A/U Tipo de Conector UHF MaCHO pl259

G Series

Black or chrome 3-1/4" diameter magnetic mount; 1-1/8"-18 thread



STANDARD CONFIGURATION

Model	Length of Coax	Coax	Connector*	Type
(R)(B)G-NC	12'	RG-58A/U	None	N/A
(R)(B)GC-NC	12'	RG-58/U	None	N/A
(R)(B)G	12'	RG-58A/U	PL259**	Crimp
(R)GP	12'	RG-58/U	PTFE PL259	Solder
(R)(B)GPL	12'	RG-58/U	Mini-UHF	Crimp
(R)GML195NCP	12'	Pro-Flex™ Plus 195	N	Crimp
(R)(B)GNCP	12'	RG-58/U	N	Crimp



G

For other cable types, lengths or connector configuration options, contact PCTEL Customer Service.

GM Series

Black or chrome 2-3/8" diameter magnetic mount; 1-1/8"-18 thread

STANDARD CONFIGURATION

Model	Length of Coax	Coax	Connector*	Type
(B)GM-NC	12'	RG-58A/U	None	N/A
(B)GMML195-NC	12'	Pro-Flex™ Plus 195	None	N/A
(B)GM	12'	RG-58A/U	PL259*	Crimp
(B)GMBN	12'	RG-58/U	BNC	Crimp
(B)GMC	12'	RG-58/U	TNC	Crimp
(B)GMML195C	12'	Pro-Flex™ Plus 195	TNC	Crimp
BGMFFME	12'	RG-58/U	Female FME**	Crimp
(B)GMMSMA	12'	RG-58/U	Male SMA	Crimp
(B)GMPL	12'	RG-58/U	Mini-UHF	Crimp



BGM



GM

For other cable types, lengths or connector configuration options, contact PCTEL Customer Service.

G-AS Series

Black or Chrome All Surface Tape Mount; 3-1/4" diameter; 1-1/8"-18 thread

STANDARD CONFIGURATION

Model	Length of Coax	Coax	Connector*	Type
G-AS-NC	12'	RF-58A/U	None	N/A



G-AS-NC

* Connectors are shipped loose. Connectors may be attached upon request for an additional charge.** Connectors are attached on these models only.(R) prefix indicates an optional rubber boot(B) prefix indicates black optionFor other connector options, please refer to the Mobile Antenna Mounts Configurator Part Number Guide.

Thick Surface Mounts - BRASS "BMA" Series

3/8" or 3/4" hole; 1-1/8"-18 thread; installs from above; can be used for metal thickness up to 1/8"



STANDARD CONFIGURATION

Model	Length of Coax	Coax	Connector*	Type
BMA38**	17'	N/A	None	N/A
BMA-NC**	17'	RG-58/U	None	N/A
BMA	17'	RG-58/U	PL259	Solder
BMANCP	17'	RG-58/U	N	Crimp
BMAPL	17'	RG-58/U	Mini-UHF	Crimp



BMA

For other cable types, lengths or connector configuration options, contact PCTEL Customer Service.

Thick Surface Mounts - BMATM Series

3/8" or 3/4" hole; 1-1/8"-18 thread; thick plate; installs from below; can be used for metal thickness to 3/16"

STANDARD CONFIGURATION

Model	Length of Coax	Coax	Connector*	Type
BMATM-NC	17'	RG-58/U	None	N/A
BMATMML195NC	17'	Pro-Flex™ Plus 195	None	N/A
BMATM	17'	RG-58/U	PL259	Solder
BMATMCP	17'	RG-58/U	PL259	Crimp
BMATMC	17'	RG-58/U	TNC	Crimp
BMATM38	N/A	None	None	N/A



BMATM

For other cable types, lengths or connector configuration options, contact PCTEL Customer Service.

Thick Surface Mounts - K/KE794 Series

3/4" hole for up to 1/2" Thick Roof Thickness

STANDARD CONFIGURATION

Model	Length of Coax	Coax	Connector*
K794	17'	RG-58/U	None
KE794	30'	RG-58/U	None



K794 Series

For other cable types, lengths or connector configuration options, contact PCTEL Customer Service.

* Connectors are shipped loose. Connectors may be attached upon request for an additional charge

** This mount installs from below. For other connector options, please refer to the Mobile Antenna Mounts Configurator Part Number Guide.

Thick Surface Mounts - BMATM3 Series

3/8" hole; 1-1/8"-18 thread; thick plate; can be used for metal thickness of 1/32"-1/2"



STANDARD CONFIGURATION

Model	Length of Coax	Coax	Connector*	Type
BMATM338	N/A	None*	None	N/A
BMATM3-NC	17'	RG-58/U	None	N/A
BMATM3	17'	RG-58/U	PL259	Solder
BMATM3MSMA	17'	RG-58/U	Male SMA	Crimp
BMATM3PL	17'	RG-58/U	Mini-UHF	Crimp



BMATM338

For other cable types, lengths or connector configuration options, contact PCTEL Customer Service.

Thick Surface Mounts - MTPM Series

5/8" hole; 1-1/8"-18 thread; thick plate mount; can be used for metal thickness of up to 1 inch. MTPM800 accommodates thickness up to 1/2 inch.

STANDARD CONFIGURATION

Model	Coax	Connector*
MTPM	None*	UG363/U
MTPM800	None*	N Female



MTPM



MTPM800

Vandal Proof Mounts - MVP Series

1-1/8"-18 thread; crimp on

STANDARD CONFIGURATION

Model	Termination	Mount	Coax
MVPHP	N Female	3/4" hole vandal-proof permanent mount for frequencies from 0 MHz to 6 GHz. Accommodates surfaces up to 1/2-inch thick.	None. Purchase mating cable assembly separately
MMF-VP	Male SMA	5/8" hole vandal-proof mount for frequencies from 0 MHz to 6 GHz. Accommodates surfaces up to .09-inch thick.	None. Purchase mating cable assembly separately



MVPHP



MMF-VP

*Connectors are shipped loose. Connectors may be attached upon request for an additional charge. For other connector options, please refer to the Mobile Antenna Mounts Configurator Part Number Guide.

NMO Style Mounts - Brass "NMO" Series

Gold Contact Pin and Brass Nut Ring



3/4" hole; 1-1/8"-18 thread; installs from above; can be used for metal thickness to 0.046"

STANDARD CONFIGURATION

Model	Length of Coax	Coax	Connector*	Type
NMO58AU-NC	17'	RG-58A/U	None	N/A
NMO34	NA	N/A	NA	N/A
NMOPFP195-NC	17'	Pro-Flex™ Plus 195	None	N/A
NMO58U-NC	17'	RG-58/U	None	N/A
NMO58UBN	17'	RG-58/U	BNC	Crimp
NMO58UFFME	17'	RG-58/U	Female FME*	Crimp
NMOPFP195FFME	17'	Pro-Flex™ Plus 195	Female FME*	Crimp
NMOPFP195MSMA	17'	Pro-Flex™ Plus 195	Male SMA	Crimp
NMOPFP195RPC	17'	Pro-Flex™ Plus 195	Reverse Polarity TNC	Crimp
NMO58AUSP	17'	RG-58A/U	PL259	Solder
NMO58AUCP	17'	RG-58A/U	PL259	Crimp
NMO58UCP	17'	RG-58/U	PL259	Crimp
NMOPFP195C	17'	Pro-Flex™ Plus 195	TNC	Crimp
NMO58UC	17'	RG-58/U	TNC	Crimp
NMO58AUPL	17'	RG-58A/U	Mini-UHF	Crimp



NMO34

For other cable types, lengths or connector configuration options, contact PCTEL Customer Service.

NMO Style Mounts - Stainless Steel "SM" Series

3/4" hole; 1-1/8"-18 thread; installs from above; can be used for metal thickness to 0.46"

STANDARD CONFIGURATION

Model	Length of Coax	Coax	Connector*	Type
SM34	17'	N/A	None	N/A
SMC-NC	17'	RG-58/U	None	N/A
SM	17'	RG-58A/U	PL259	Solder
SMPL	17'	RG-58/U	Mini-UHF	Crimp
SMC	17'	RG-58/U	TNC	Crimp



SM

For other cable types, lengths or connector configuration options, contact PCTEL Customer Service.

* Connectors are attached on these models only. For all other models, connectors are shipped loose. Connectors may be attached upon request for an additional charge. For other connector options, please refer to the Mobile Antenna Mounts Configurator Part Number Guide.

Heavy-Duty Magnetic Mount Series

Black 3-1/4" diameter magnetic mount; 1-1/8"-18 thread



STANDARD CONFIGURATION

Model	Coax	Connector	Tab	Use with PCTEL Antenna Platforms
PCTMAG-HD	12-foot Pro-Flex Plus 195	Attached TNC Male	18-8 Stainless Steel	PCTCN Chrome Nut or BMAX Molded Coil Antennas
PCTMAG-HD-NT	12-foot Pro-Flex Plus 195	Attached TNC Male	-	PCTWSLMR, MHB and MUF Chrome Coil and MLPV Series



PCTMAG-HD



PCTMAG-HD-NT

For other cable lengths and connector configuration options, contact PCTEL Customer Service.

High Frequency Mounts

1-1/8"-18 thread; Crimp on

STANDARD CONFIGURATION

Model	Mount Type	Coax	Connector*
MMF	3/4" hole permanent microwave mount for frequencies from 0 MHz to 6.0 GHz. Accommodates thickness up to .06 inches.	None. Purchase mating cable assembly separately	Male SMA
MMF-VP	3/4" hole vandal-proof mount for frequencies from 0 GHz to 6 GHz. Accommodates surfaces up to .09-inch thick.	None. Purchase mating cable assembly separately	Male SMA
MLFML195C	3/4" hole permanent mount for frequencies from 0 MHz to 6.0 GHz. Accommodates thickness up to 0.046 inches.	17 ft. Pro-Flex™ Plus 195	Loose TNC Male standard. Contact customer service for other connector options.
GMLFML195C	Magnetic base mount for frequencies from 0 MHz to 6.0 GHz.	12 ft. Pro-Flex™ Plus 195	Attached TNC Male standard. Contact customer service for other connector options.
MLFPP240C	3/4" hole permanent mount for frequencies from 0 MHz to 6.0 GHz. Accommodates thickness up to 0.046 inches.	17 ft. Pro-Flex™ Plus 240	Loose TNC Male standard. Contact customer service for other connector options.



MMF



MMF-VP



MLFML195C



GMLFML195C

For other cable lengths and connector configuration options, contact PCTEL Customer Service.

High Frequency Mounts For Thick Roof Surfaces

5/8" hole; 1-1/8"-18 thread; Crimp on

STANDARD CONFIGURATION

Model	Mount Type	Coax	Connector
MVPH	Vandal-proof permanent mount for frequencies from 0 MHz to 6 GHz. Accommodates thickness up to 1/2-inch.	None. Purchase mating cable assembly separately	N Female



MVPH

K Mounts

3/4" Hole Rooftop Mounts for 800 MHz "Male-Female Contact" Antennas



STANDARD CONFIGURATION

Model	Length of Coax	Coax	Connector*
K166M	17'	RG-58/U	Mini-UHF crimped
K166T	17'	RG-58/U	TNC Male crimped
KD166T	17'	Pro-Flex™ Plus 195	TNC Male crimped
KE166U	17'	Pro-Flex™ Plus 195	FME Female
KE166UMT	17'	Pro-Flex™ Plus 195	FME Female**



K166

3/8" Snap-In Rooftop Mount for Quarter Wave Antennas (sold in packs of 5 units each)

STANDARD CONFIGURATION

Model	Length of Coax	Coax	Connector
K44//5PCK	N/A	Sold Separately	None



K44//5PCK

(B)MBM Series

Black or chrome, 1-1/8"-18 thread; mirror bracket mount

STANDARD CONFIGURATION

Model***	Length of Coax	Coax	Connector*	Type
(B)MBM-NC	17'	RG-58A/U	None	N/A
MBMC-NC	17'	RG-58/U	None	N/A
(B)MBM	17'	RG-58A/U	PL259	Solder
(B)MBMC	17'	RG-58/U	TNC	Crimp
(B)MBMPL	17'	RG-58/U	Mini-UHF	Crimp



BMBM MOUNTS

For other cable types, lengths or connector configuration options, contact PCTEL Customer Service.

* Connectors are shipped loose. Connectors may be attached upon request for an additional charge

** Plus MINI-UHF to FME and TNC to FME adapter loose

*** (B) prefix indicates black option



TGBWP Series

1-1/8"-18 thread; trunk/hood groove bracket mount

STANDARD CONFIGURATION

Model	Length of Coax	Coax	Connector*	Cable Exit Angle	Type
TGBWP45C-NC	17'	RG-58/U	None	45°	N/A
TGBWP45PL	17'	RG-58/U	Mini-UHF	45°	Crimp
TGBWP45FFME	17'	RG-58/U	Female FME*	45°	Crimp



TGBWP45

T Series

1-1/8"-18 thread mount; trunk lid mount

STANDARD CONFIGURATION

Model	Length of Coax	Coax	Connector*	Type
TTT	NA	None	None	N/A
T-NC	17'	RG-58A/U	None	N/A
TC-NC	17'	RG-58/U	None	N/A
T	17'	RG-58A/U	PL259	Solder
TC	17'	RG-58/U	TNC	Crimp
TPL	17'	RG-58/U	Mini-UHF	Crimp



T

BMT Series

Black 1-1/8"-18 thread; all metal trunk lid mount; 17' RG-58/U or RG-58A//U cable options. For other cable lengths and connector configuration options, contact PCTEL Customer Service.



BMT

* Connectors are shipped loose. Connectors may be attached upon request for an additional charge. For other connector options, please refer to the Mobile Antenna Mounts Configurator Part Number Guide.

VOICE & DATA COMMUNICATIONS EQUIPMENTS CORP

RUC. 1385747-1- 625113 DV 0

Vía. España Edificio Domino piso 2 oficina 21, a 30mtrs de vía argentina

Telf. 3936454 / 61068034 / 60902085

INFORMACIÓN TECNICA

Antena Base VHF, de 4 Dipolos.

Modelo: DB224A

Marca: **ANDREW**

Especificaciones:

-Rango de Frecuencia: A (150-160 MHz.), B (155-165 MHz.), C (164-174 MHz.), E (138-150 MHz.)

-Dipolos: 4.

-Ganancia: 6 / 9 dB.

-Ancho de Banda: 10 MHz.

-Potencia: 500 Watts.

-Conector: N Macho.

-Resistencia al viento: 129 Km/h.





DB408-B

Andrew® Omni Exposed Dipole Antenna, 450–470 MHz, 360° horizontal beamwidth, fixed electrical tilt

- Broad response
- Moisture resistant
- Rugged, reliable design

Electrical Specifications

Frequency Band, MHz	450–470
Gain, dBi	8.7
Beamwidth, Horizontal, degrees	360
Beamwidth, Vertical, degrees	14.0
Beam Tilt, degrees	0
VSWR Return Loss, dB	1.5 14.0
Input Power per Port, maximum, watts	250
Polarization	Vertical
Impedance	50 ohm

General Specifications

Antenna Brand	Andrew®
Antenna Type	Omni, exposed dipole
Band	Single band
Operating Frequency Band	450 – 470 MHz
Performance Note	Outdoor usage

Mechanical Specifications

Color	Silver
Lightning Protection	dc Ground
Radiator Material	Aluminum
RF Connector Interface	N Male
RF Connector Location	End of flexible lead
RF Connector Quantity, total	1
Wind Loading, maximum	338.1 N @ 100 mph 76.0 lbf @ 100 mph
Wind Speed, maximum	201 km/h 125 mph

Dimensions

Length	2870.2 mm 113.0 in
Net Weight	7.7 kg 17.0 lb

Regulatory Compliance/Certifications

Agency	Classification
RoHS 2011/65/EU	Compliant by Exemption
China RoHS SJ/T 11364-2006	Above Maximum Concentration Value (MCV)

DB408-B

POWERED BY



ISO 9001:2008

Designed, manufactured and/or distributed under this quality management system



Included Products

DB365-OS — Pipe Mounting Kit that consists of two clamps for mounting antennas to round members 1.25 - 3.5 in (35 - 89 mm) OD round members.

* Footnotes

Performance Note Severe environmental conditions may degrade optimum performance

VOICE & DATA COMMUNICATIONS EQUIPMENTS CORP

RUC. 1385747-1- 625113 DV 0

Vía. España Edificio Domino piso 2 oficina 21, a 30mtrs de vía argentina

Telf. 3936454 / 61068034 / 60902085

INFORMACION TECNICA

**Antena de radio frecuencia para
repetidora.**

MODELO. G6-440

MARCA. HUSTLER

CASA PRODUCTORA. HUSTLER

PAIS DE ORIGEN. ASIA



Patrón de radiación: omnidireccional, ganancia 6dBd / 6dBd, ancho de banda 10MHz en 2 metros y 3 MHz a 450MHz, 100 vatios de potencia, conector N-HEMBRA, altura 102 pulgadas (2.6M), diseño 4x5/8 colineal de onda de 440MHz y más de 5/8 5/8 colineal de 2metros, el viento de supervivencia 100mph.

VOICE & DATA COMMUNICATIONS EQUIPMENTS CORP

RUC. 1385747-1- 625113 DV 0

Vía. España Edificio Domino piso 2 oficina 21, a 30mtrs de vía argentina

Telf. 3936454 / 61068034 / 60902085

INFORMACIÓN TÉCNICA

Antena Base UHF Fibra de Vidrio, Omnidireccional
Rango de Frecuencia 450 - 458 MHz.

Modelo: G6-4501

Marca: HUSTLER

Esta antena pertenece a la exitosa y bien conocida serie G de Hustler, la cual está diseñada para ofrecer el máximo rendimiento, calidad y durabilidad al mejor precio.

Ventajas

- Mejor cobertura gracias a su diseño eléctrico que provee un patrón estable y un ángulo bajo de radiación.
- Cubierta de fibra de vidrio para soportar las condiciones ambientales más adversas.
- Conexión directa a tierra que reduce la exposición a descargas eléctricas y electricidad estática.

Especificaciones

- Rango de Frecuencia: 450-458 MHz
- Ganancia: 6 dB.
- Ancho de Banda: 8 MHz.
- Potencia: 250 Watts.
- Conector: N Hembra.
- Longitud Máxima: 2.2 m.
- Resistencia al viento: 200 km/h.

Accesorios incluidos para montaje en mástil con diámetro de hasta 1 1/2".





G7-136 SERIES

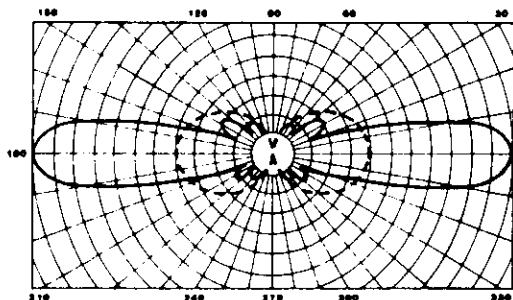
- The G7-136 is tunable from 136-144 MHz
- Ideal for fixed or repeater applications
- Low angle radiation for optimum signal
- Constructed of high strength aluminum and fiberglass
- Totally self-supporting design

ELECTRICAL

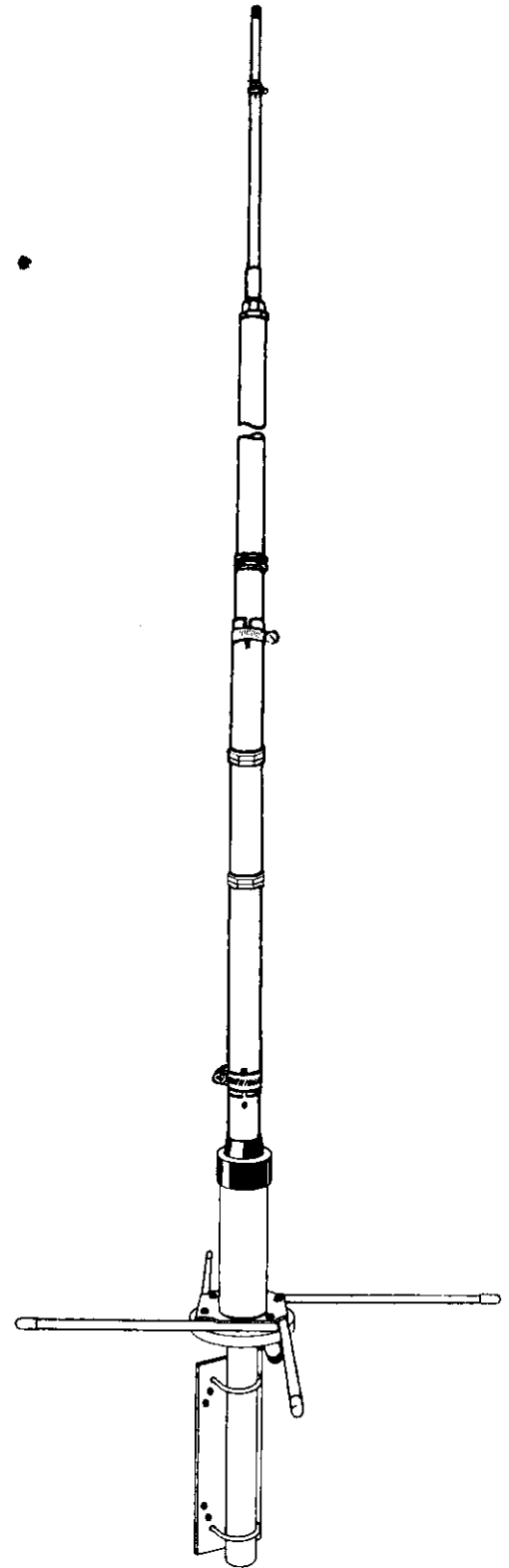
Maximum power input	600 watts FM
Gain	7 dBd
VSWR	6 MHz for 2:1
Bandwidth	3 MHz under 1.5:1
Impedance	50 ohms nominal
Lightning protection	Shunt fed- Direct ground
Termination	Type N female

MECHANICAL

Length	15 feet 4 inches
Weight	10 lbs
Wind Survival	100 mph
Equivalent flat plate area	1.16 Ft ²
Lateral thrust	46 lbs at 100 mph
Mounting	Up to 2 inches



E-PLANE



VOICE & DATA COMMUNICATION EQUIPMENT CORP

RUC 1385747-1-625113 DV 0

INFORMACION TECNICA

ANTENA MARCA KENWOOD

CASA PRODUCTORA KENWOOD

ORIGEN SINGAPUR O CHINA

MODELO KRA 26



Kenwood VHF Helical Antena 136-174 MHz (KRA-26)

VHF helical antenna 136-174 MHz para radios Kenwood TK-2160, TK-2170, TK-2180, TK-2200L, TK-290 TK-2360 TK272G



VOICE & DATA COMMUNICATIONS EQUIPMENTS CORP

RUC. 1385747-1- 625113 DV 0

Vía. España Edificio Domino piso 2 oficina 21, a 30mtrs de vía argentina

Telf. 3936454 / 61068034 / 60902085

Modelo: KRA-27

Marca: **KENWOOD**



ESPECIFICACIONES

UHF Whip Antenna

Disponible como KRA-27M (440-490MHz) y ARC-27m3 (400-450MHz).



VOICE & DATA COMMUNICATIONS EQUIPMENTS CORP

RUC. 1385747-1- 625113 DV 0

Vía. España Edificio Domino piso 2 oficina 21, a 30mtrs de vía argentina

Telf. 3936454 / 61068034 / 60902085

Modelo: LMG-150

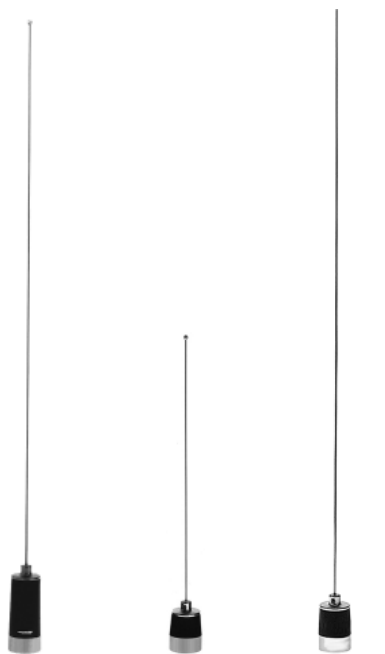
Marca: HUSTLER

**Antena Móvil VHF, Ajustable en Campo,
Rango de Frecuencia 148-174 MHz.**

Especificaciones:

- Rango de Frecuencia: 148-174 MHz.
- Ganancia: 5 dB.
- Potencia: 200 Watts.
- Cable: N/A.
- Conector: N/A.
- Longitud Máxima: 93 cm.
- Requiere: Montaje de 3/4" NMO58UNC.





MHBDC5800 MUF4503 MHB5800



Technical Data

Maximum Power: 200 watts
Nominal Impedance: 50 ohms
VSWR at Resonance: < 1.5:1
Radiator Material: .100"-.062" diameter stainless steel
Grounding: DC Grounded (MHBDC model only)
Optional Spring: Stainless steel
Base Coil Housing: Molded polymer jacket with copper, nickel and chrome plated bushing
Antenna Type: Base loaded 5/8 Wave

Base Loaded Field Tunable 3dB Gain Antennas

These 5/8 Wave antennas utilize a chrome coil design with the enhancement of a heavy duty tapered rod for maximum durability in tough environments.

Features

- The matching coil is supported by a low loss coil for superior performance in heavy shick applications
- The tapered coil housing design enhances appearance and prevents moisture from entering the load
- Mates with all 1-1/8" -18 thread mounts, including 3/4" mounts

Electrical Specifications

Model	Frequency Range	Factory Tuned Frequency	Gain
MHB5800132(S)	132-174 MHz	Field tunable	3 dB
MHBDC5800(S)**	144-174 MHz	Field tunable	3 dB
MHB5800(S)	144-174 MHz	Field tunable	3 dB
MUF4503(S)	450-470 MHz	Field tunable	3 dB

Mechanical Specifications

Model	Antenna Height at lowest frequency
MHB5800132(S)	Approximately 58"
MHBDC5800(S)**	Approximately 52"
MHB5800(S)	Approximately 52"
MUF4503(S)	Approximately 16"

Suffix "S" indicates spring and is not a retrofit option, please indicate at time of order.
 ** MHBDC5800(S) has a 5 MHz bandwidth @ 1.5:1 VSWR. This is a DC grounded antenna

VOICE & DATA COMMUNICATION EQUIPMENT CORP

RUC 1385747-1-625113 DV 0

INFORMACION TECNICA

ANTENA MOTOROLA

CASA PRODUCTORA MOTOROLA

ORIGEN MALASYA O CHINA

MODELO NAD 6502AR



**Motorola VHF Heliflex Antena, 136-174
MHz [NAD6502AR]**

DESCRIPCION

. Antenas de látigo flexible tienen un acabado de una sola pieza, núcleo de acero y conductor enrollado en espiral para las características óptimas de radiación

Para los radios Motorola modelos : CP125, CP150, CP200, PR400, PR860, VL130, P100, P110, GP300, GP350, SP50, HT750/HT1250, HT1550XLS, EX500/EX600, EP450, EP350, PRO5150

VOICE & DATA COMMUNICATION EQUIPMENT CORP

RUC 1385747-1-625113 DV 0

INFORMACION TECNICA

ANTENA MOTOROLA

CASA PRODUCTORA MOTOROLA

ORIGEN MALASYA O CHINA

MODELO NAD 6502AR



Motorola VHF Heliflex Antena, 136-174 MHz [NAD6502AR]

DESCRIPCION

. Antenas de látigo flexible tienen un acabado de una sola pieza, núcleo de acero y conductor enrollado en espiral para las características óptimas de radiación

Para los radios Motorola modelos : CP125, CP150, CP200, PR400, PR860, VL130, P100, P110, GP300, GP350, SP50, HT750/HT1250, HT1550XLS, EX500/EX600, EP450, EP350, PRO5150

Heavy Duty Low Profile Base Gain Antennas

These antennas feature a heavy-duty low profile base with tapered loading coil jacket, chrome plated brass fittings and an optional heavy-duty stainless steel spring. Available with either an open coil rod or our "quiet" closed coil rod design.

Features

- Low profile double-sealed housing for maximum weather-proofing
- Plated fittings for superior performance and durability in the toughest environments
- Mates with all 1-1/8"-18 thread mounts, including 3/4" mounts

Electrical Specifications

Model	Frequency Range	Factory Tuned Frequency	Gain	Rod/Coil Type
MUF3505(S)	350-400 MHz	Antennas are field tunable within the specified frequency range.	5 dB	Collinear/Closed
MUF4065(S)	406-430 MHz		5 dB	Collinear/Closed
MUF4305(S)	430-450 MHz		5 dB	Collinear / Closed
MUF4505(S)	450-470 MHz		5 dB	Collinear/Closed
MUF4705(S)	470-490 MHz		5 dB	Collinear/Closed
MUF4905(S)	490-512 MHz		5 dB	Collinear/Closed
MUF8105(S)	806-866 MHz		815 MHz	5 dB
MUF8005(S)	806-866 MHz	815 MHz	5 dB	Trilinear/Closed
MUF8103(S)	806-896 MHz	815 MHz	3 dB	Collinear/Open
MUF8003(S)	806-896 MHz	815 MHz	3 dB	Collinear/Closed
MUF8325(S)	825-896 MHz	835 MHz	5 dB	Trilinear/Closed
MUF9035(S)	896-940 MHz	898 MHz	5 dB	Trilinear/Closed

Mechanical Specifications

Model	Antenna Length at lowest frequency
MUF3505(S)	Approximately 32"
MUF4065(S)	Approximately 32"
MUF4305(S)	Approximately 32"
MUF4505(S)	Approximately 32"
MUF4705(S)	Approximately 32"
MUF4905(S)	Approximately 32"
MUF8105(S)	Approximately 25"
MUF8005(S)	Approximately 25"
MUF8103(S)	Approximately 15.5"
MUF8003(S)	Approximately 15.5"
MUF8325(S)	Approximately 25"
MUF9035(S)	Approximately 25"

Suffix "S" indicates spring option.



Technical Data

Maximum Power: 200 watts
Nominal Impedance: 50 ohms
VSWR at Resonance: < 1.5:1
Radiator Material: .100" diameter stainless steel
Optional Spring: Stainless steel
Phasing Coil Housing: Low profile molded polymer jacket with copper, nickel and chrome plated bushing
Base Coil Housing: Low profile molded polymer with copper, nickel and chrome plated bushing
Antenna Type: 3 dB: 5/8 wave over a 1/4 wave 5 dB: 5/8 wave over a 1/4 wave



VOICE & DATA COMMUNICATIONS EQUIPMENTS CORP

RUC. 1385747-1- 625113 DV 0

Vía. España Edificio Domino piso 2 oficina 21, a 30mtrs de vía argentina

Telf. 3936454 / 61068034 / 60902085

Modelo: SYS-45-332P

Marca: EPCOM INDUSTRIAL

Especificaciones:

- Banda de frecuencia: 440-470 MHz
- Separación TX-RX: 5 to 8 MHz.
- Máxima Potencia de Entrada continua: 50 Watt.
- Impedancia: 50 Ohm.
- Pérdida por Inserción (TX-Ant): 1.2 dB máx.
- Pérdida por Inserción (Ant-RX): 1.2 dB máx.
- Aislamiento TX-RX: 80 dB típico.
- VSWR, máx. (50 Ohms): 1.3:1
- Conectores: BNC (N, UHF Opcionales).
- Rango de Temperatura: -10 to 60° C.
- Dimensiones: 31.8(1 1/4) X 157 (6 3/16) X 228 (9) mm(in)
- Peso: 1.7 Kg (3.5 Lb.)-



Descripción de Producto

- La serie de Duplexers móviles SYS-4533-xP usan seis cavidades resonantes capacitivamente sintonizadas en un compacto chasis extruido de aluminio 6063-T5 templado, se usan tubos solidos de cobre plateados para blindaje, aislantes de Teflón y cable confortable de baja pérdida para la interconexión y la unidad entera es pintada electrostáticamente para una protección adicional.
- Ampliamente usados en sistemas "Full Duplex" con radios móviles y repetidores (50 W. máx).
- Mínimo corrimiento de frecuencia por cambios de temperatura
- El uso de este filtro con separación entre frecuencias menor de 5 MHz puede causar problemas en el repetidor.
- Este dispositivo no le ayudará a resolver problemas de sensibilidad en lugares de alta incidencia de RF.
- Al interconectar el Pasa-Alto y Pasa-Bajo del duplexer con el repetidor se debe identificar la frecuencia mas alta para el "High Pass" al igual con la frecuencia baja para el "Low Pass" independientemente por cuál se Transmita o Reciba.



VOICE & DATA COMMUNICATIONS EQUIPMENTS CORP

RUC. 1385747-1- 625113 DV 0

Vía. España Edificio Domino piso 2 oficina 21, a 30mtrs de vía argentina

Telf. 3936454 / 61068034 / 60902085

Modelo: SYS-1533-3

Marca: [EPCOM INDUSTRIA](#)

Duplexer de Rechazo de Banda.

-Separación de frecuencia de 5 a 8 MHz.

-Pérdida por inserción máxima de 1.2 dB.

-Aislamiento entre Tx y Rx:80 dB.

-Amplio uso en radios móviles Full y repetidoras (50 W máximo).

-Mínimo corrimiento de frecuencia por cambios de temperatura.

-Resonadores de tubo de cobre plateado (UHF) y Resonadores Helical de cobre estañado (VHF).

-Aislamiento de Teflón para VHF y UHF.

-Interconexión con cables conformables reducen la pérdida por inserción.

-Blindaje con cavidades de Aluminio extruido 6063-T5 templado.

-Dimensiones: 159 x 31.8 x 216 mm.



Antena Base

1450

**Especificaciones:**

- Tipo: Omnidireccional.
- Rango de Frecuencia: 400-500 MHz.
- Ganancia: 5 dB.
- Potencia: 200 Watts.
- Conector: UHF Hembra.
- Longitud: 1 m.
- Ancho de banda: 10 MHz.
- Resistencia al viento: 193 km/h
- Construcción: Fibra de vidrio.

VHF Mobile Duplexer, 154-164MHz, BNC-Female

Product Description

RFS's 636-6 Series uses three capacitively tuned, temperature compensated helical resonators in the receiver channel and three more in the transmit channel. The resonators are housed in a compact 6063-T6 irridite aluminum extrusion that is painted for additional protection.



636-6A Series

Features/Benefits

- **Low loss – Maximizes system performance.**
- **High isolation – Minimizes interference.**
- **Unique construction – For low loss and system stability.**

Technical Specifications

Frequency Band	100 MHz - 174 MHz
Application	VHF
Type	Mobile
Frequency Spacing, MHz	4.5
Tx to Rx Isolation, dB	75 or greater
Insertion Loss, dB	1.2
Frequency Range, MHz	154-164
Tx/Rx Bandwidth, MHz	0.025
Connector Type	BNC-Female
Rack Mount	No
Tx Bandwidth, MHz	0.025
Rx Bandwidth, MHz	0.025
Continuous Power Input, Max., Watts	50
Insertion Loss, Tx - Ant., dB	1.2
Insertion Loss, Rx - Ant., dB	1.2
Tx Noise Suppression at Rx Frequency, dB	80
Rx Isolation at Tx Frequency, dB	80
VSWR, Max. (50 ohms)	1.5:1
Connectors - Ant. Port	BNC-Female
Connectors - Tx Port	BNC-Female
Connectors - Rx Port	BNC-Female
Temperature Range, °C (°F)	-30 to +60 (-22 to +140)
Height, mm (in)	31.8 (1-1/4)
Width, mm (in)	159 (6-1/4)
Depth, mm (in)	216 (8-1/2)
Mounts in 19" (483mm) EIA Rack (Yes/No)	No
Weight, kg (lb)	1 (2.2)

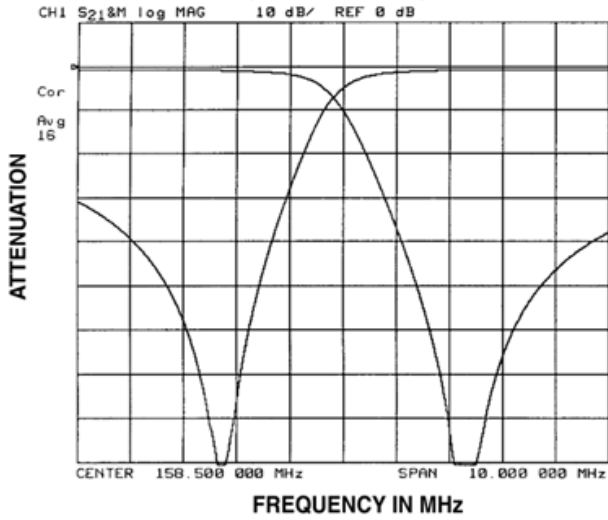
Notes

Other Documentation



VHF Mobile Duplexer, 154-164MHz, BNC-Female

636-6A RESPONSE CURVES (Typical)
4.5 MHz SPACING
(136-174 MHz)



Response Curve

All information contained in the present datasheet is subject to confirmation at time of ordering