



# Power Champion Series

Low Frequency Online UPS

Power Champion Series is a configurable uninterruptible power supply (UPS) system range that offers true industrial modular architecture and maximized power performance. It combines conservative design (SCR/IGBT) with battery management system and proven digital control to ensure the utmost reliability in any electrical and environmental conditions.

### Benefit:

- Customizable system to comply with most customer's requirement.
- Ruggedized solutions for harsh environment, high temperatures, demanding environments, vibrations, dust, moisture etc.
- Safe and easy maintenance includes segregated manual bypass and front door access to major components improve safety and reduce MTTR.
- Higher input power factor and lower inrush current allow smaller upstream transformer, switchgear and cables and reduce the line currents and losses in the cables which proves to be cost savings solutions.



10-800KVA  
3Ph in/ 3Ph out  
3Ph in/ 1Ph out





## Key features:

- **Advanced technology:** Use advanced 6th generation DSP and full digital control technologies to ensure higher system stability.
- **Cost effective:** Output power factor is 0.9, carrying capacity than conventional UPS with 10% above, as users investment cost is reduced to some extent which proves to be cost effective solution.
- **Parallel operation:** Advanced distributed active parallel technology make sure parallel operation of 6PCS UPS units without the need of centralized bypass cabinet.
- **Reliability:** Standard input/output filter improves the system EMC performance, which provides reliability to the system.
- **High efficiency:** The efficiency of the system is 94%, which saves a lot of energy.
- **N+X redundancy:** With the help of the proper parallel operation, N+X redundancy can easily be provided by the system.
- **Protection:** Extra strong capability to withstand output overload and short circuit, low or high voltage, voltage fluctuation, surge voltage, harmonic distortion, clutter interference etc. ensuring the system stability and system safety under extreme conditions.
- **Monitoring system:** 6-inch extra large LCD which is programmable with 12 languages, all types of real-time operation can be monitored very easily. Intelligent "self-diagnosis" management system can provide more than 90 types of alarm/ fault information along with alarm log.
- **Intelligent battery management system:** can execute the self-diagnosis test regularly and display battery charging capacity and backup time automatically. It's also equipped with battery charging system with temperature compensation and automatic regulations functions. These helps to prolong the battery life.
- **Adaptability:** Wide input voltage and frequency range capability to cope with the worst utility conditions.
- **Compatibility:** As per customer requirement, the system can be designed with Lead Acid or NiCd batteries, sealed or vented.

## Application:



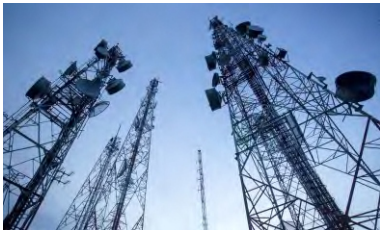
### Industrial Automation

Process Control Equipment  
Motion (digital drives and robotics)  
Transport Automation  
Airport automation  
Railways and Road transport automation and ticket booking



### Information Technology

Large Internet Data centers  
Coloration Facilities  
Server Farms  
Internet Service Providers



### Telecommunication

Mobile (3G,4G)  
Fixed (including WLL)  
MSC, BSC centers



### Corporate Parks

Banking, Insurance and Financial Services.  
Credit Card Operation  
Stock Exchange Operation  
Software Development Houses/Software Technology Parks  
BPO/KPO/EPO Operation



### Building Automation

Access Control  
Security System  
Fire Alarm System



### Medical Diagnostics

Magneto Resonant Imaging  
CT Scanning/Cath Lab  
Multiple medical imaging units



### Satellite

Uplinking  
Earth Stations  
Broadcasting & Entertainment

## Technical data:

Power Champion Series	Power Champion 150KVA	
Model	PW150	
Rated Input Voltage	480VAC 3-phase 4-wire	
Rated Frequency	50/60HZ	
Input Parameters		
Input Voltage Range	±25%	
Input Frequency Range	45Hz ~ 65Hz	
Input Soft Start Function	0-100% 5-300S settable	
Input Power Factor	> 0.9	
Input harmonic current(THDi)	ˆ20%	
Bypass		
Bypass Voltage Range	-20%~+15%	
Bypass Frequency Range	50/60HZ±10%	
Output Parameters		
Inverter Output Voltage	208VAC 3-phase	
Voltage Stability	±1%(Steady status), ±3%(Transient status)	
Frequency	50/60Hz	
Mains power synchronization window	±5%	
Actually measured frequency accuracy(internal clock)	50/60Hz±0.05Hz	
Output Power Factor	0.9	
Transient Response Time	<5ms	
Inverter Overload Capability	At 0.9 power factor, 110% for 1 hour, 125% for 10 minutes and 150% for 60s	
Short circuit current from inverter	3ph 1.5In for 5seconds 1ph 2.9In for 5seconds	
DC Voltage	384VDC	
Maximum Bypass Capability	1000% for 100ms	
Phase Shift Characteristic	With 100% balanced load	<1%
	With 100% imbalanced load	<1%
Total Harmonic Distortion	100% linear load	<1%
	100% non-linear	<3%
Rectifier Output Parameters		
Charger output voltage stability	1%	
DC Ripple Voltage	≤1%	
Operating Environment		
Operating Temperature Range	-10°C ~ 40°C	
Storage Temperature	-25°C~70°C	
Relative Humidity	0 ~ 95% (Non-condensing)	
Maximum Operating Height	≤ Elevation 1000m, for elevation above 1000m, derate by 1% for every increase of 100m	
Noise (1m)	58-68dB	
Protection level	IP54	
Standard	Safety: IEC60950-1 IEC62040-1-1 UL1778 EMC IEC62040-2 CLASS C2 EN50091-2 CLASS A Design and Test IEC62040-3	
Accessories	RS232 / RS485, USB, EPO, SNMP, Modbus-TCP/IP (optional)	

**EverExceed**<sup>®</sup>  
*power your applications*



**EVEREXCEED CORPORATION**

E-mail: [marketing@everexceed.com](mailto:marketing@everexceed.com)

Web: [www.everexceed.com](http://www.everexceed.com)

Copyright © EverExceed Corporation. All rights reserved. ( V1.2 - 2020.07.11 )

